

The most efficient and powerful solar power generators in the world

The Arzon Solar *uM2-Silicon* system is a fully integrated, easy-to-install silicon module solar power generator designed for robust and reliable solar power electricity generation.

The uM2-Silicon system allows for easy mounting of silicon modules from a variety of manufacturers. The uM2 Dual Axis Tracker provides robust, field proven design for high precision tracking.

Arzon Solar enjoys strong relationships with silicon module vendors, however the uM2-Silicon can be purchased with or without silicon modules.

**30-40%
More Energy**

**4-5 kW
Power**

**17-23%
Efficiency**

**1/2
The Cost**

Superior Energy

The uM2-Silicon Dual Axis Tracker delivers maximum energy from your solar modules compared to fixed tilt or single-axis tracking.

Superior Power

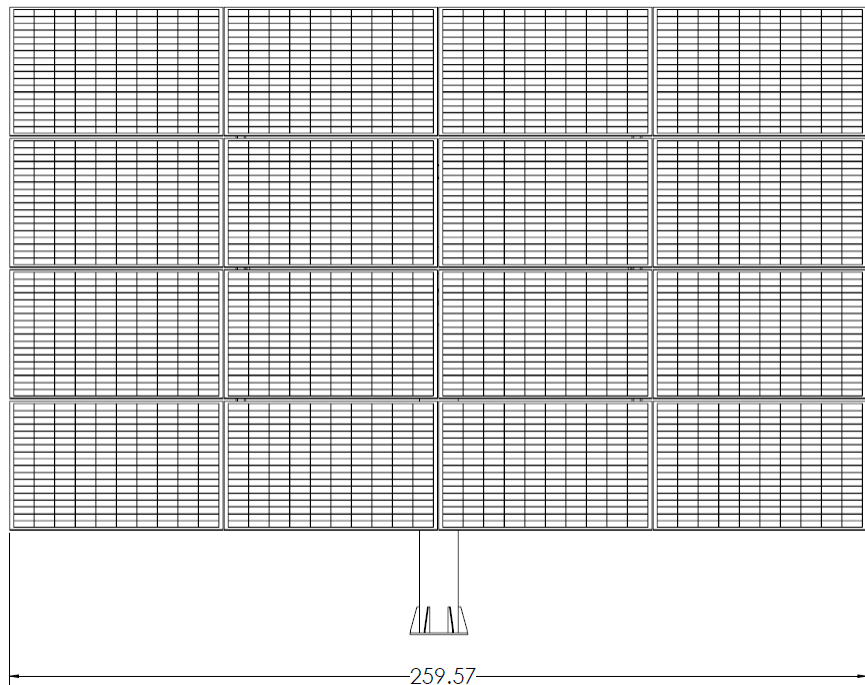
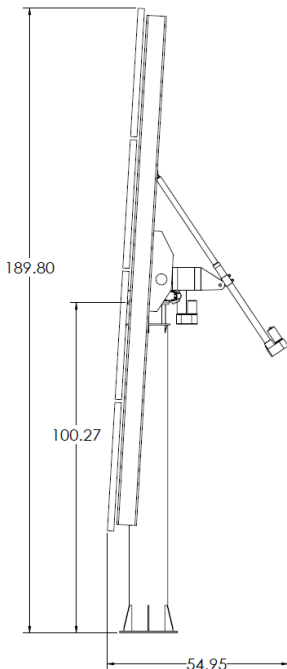
The uM2-Silicon system can hold 26m² of poly or mono silicon modules, for 3.8-5.5 kW of rated power.

Superior Efficiency

uM2-Silicon integrates seamlessly with traditional c-Si modules and high efficiency m-Si modules.

Superior Economics

Our uM2 Dual Axis Tracker is up to half the cost of competing dual axis trackers on the market today without sacrificing performance or reliability.



Dimensions in Inches, Figure is 6' tall reference

uM2-Silicon Typical Performance

Typical Power with 16x c-Si Modules ¹	3.8 kW STC
Typical Power with 16x m-Si Modules ²	5.5 kW STC

uM2-Silicon Tracker + Structure Specifications

Weight (without Modules)	1,100 lbs / 499 kg
Frontal Area of Modules Held	276 ft ² / 26 m ²
Outer Dimensions	260" x 190" x 55" 6.6m x 4.8m x 1.4m
Mounting Type	Pedestal mounted
Structure Type	Galvanized steel

uM2 Dual Axis Tracker Performance

Tracking Accuracy	+/- 4 deg (Si) / 0.2 deg (CPV)
Modules Supported	Si, CPV
Elevation Angle range	-5° - 80°
Azimuth Angle range	135° to -135°
Tracking Modes	Open loop Si (GPS guided) / Closed loop CPV (optical sensor)
Ground Interface design provided	Direct burial + concrete, flanged pedestal + concrete with studs, concrete pre-form or no-penetration spread pedestal
O&M	1x / yr drive train clean & grease 1x / yr control cabinet cleaning

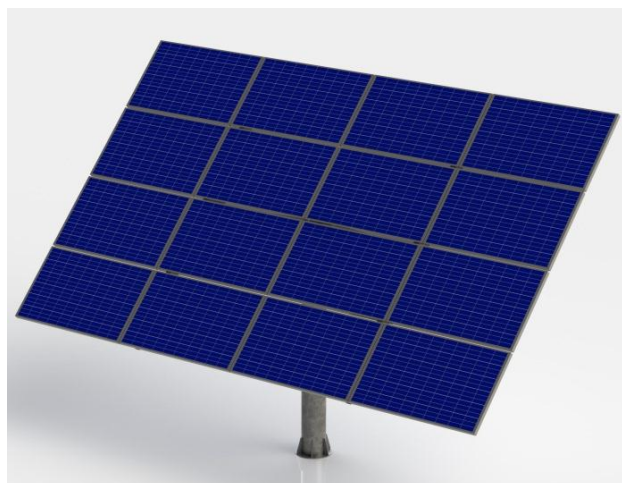
Environmental Specifications

Max survival wind speed	100 mph / 40 m/s stowed
Max operating wind speed	40 mph / 18 m/s direct
Operating temp range	-4°F / -20°C to 122°F / 50°C
Survival temp range	-40°F / -40°C to 140°F / 60°C

Transport and Packing Specifications

Shipment type and dunnage	Standard pallet with disposable support
---------------------------	---

Product Images



uM2-Silicon tracking mode shown with 16x Si modules mounted



uM2-Silicon stow mode shown with 16x Si modules mounted

Warranty and Certifications

Workmanship	3 year limited product warranty
Performance	25 year limited power warranty
Certifications	UL3703, CE, RoHS

1: Assumed 240W STC, 1.6 m², 15% c-Si standard module
2: Assumed 345W STC, 1.6 m², 21% m-Si SunPower X21-345 module